



KOTĀTĀ HEIGHTS

Kotātā Heights is Whangarei's newest suburb in the heart of the city. This prime residential area is elevated and sunny, with expansive views, all just minutes from the city's amenities.

Kotātā Heights gives you the opportunity to enjoy a brand new home with lovely semi-rural and harbour views, all just minutes from the city. This fantastic suburb gives new meaning to 'close and connected', being centrally located in the heart of Whangarei's main shopping precincts, with close connections to schools, Whangarei Hospital, city bus routes, NorthTec and State Highway One.

Kotātā Heights offers an elevated outlook across rural farmland as well as harbour views from some sections. With an east to west orientation, you will also be treated to morning and afternoon sun.

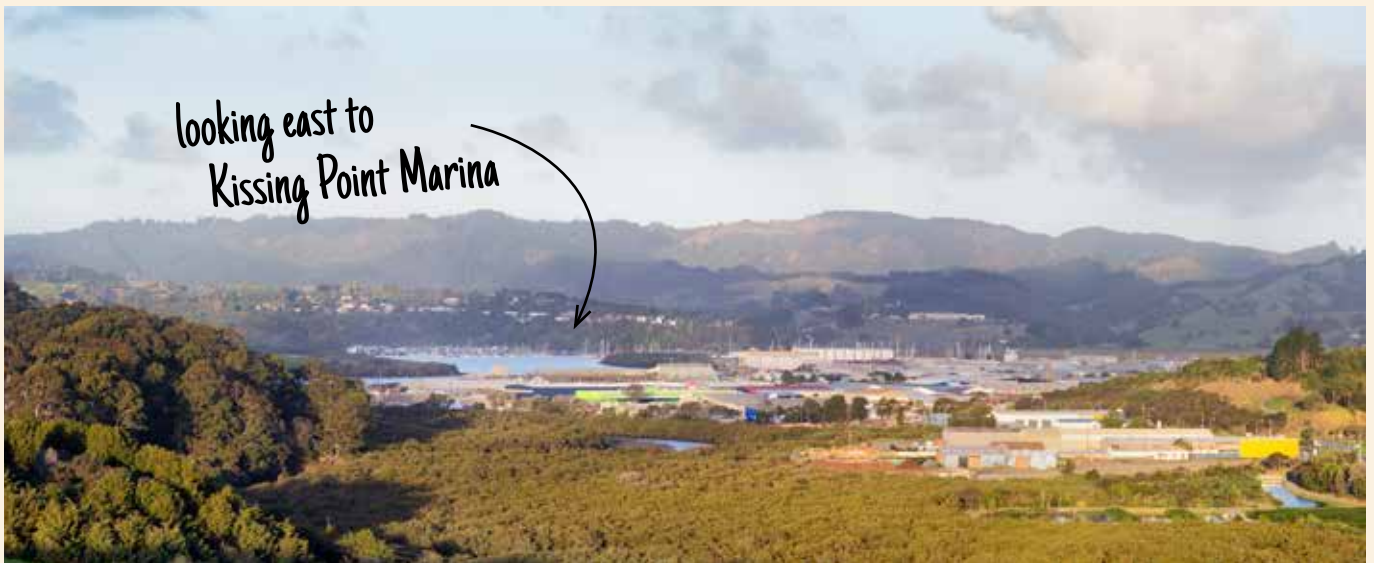
The third and fourth stages of development include 60 residential sections, priced from just \$200,000. Titles will be available in approximately October 2019, ready for you to begin the design and build of your new home

All sections include covenants which have been thoughtfully developed to allow home owners the flexibility to reflect their own individuality, while ensuring a quality standard that reflects the pride you will have in your new home and community.

info@kotata.co.nz

www.kotata.co.nz

Views from the Kotātā Heights Development





KOTĀTĀ HEIGHTS

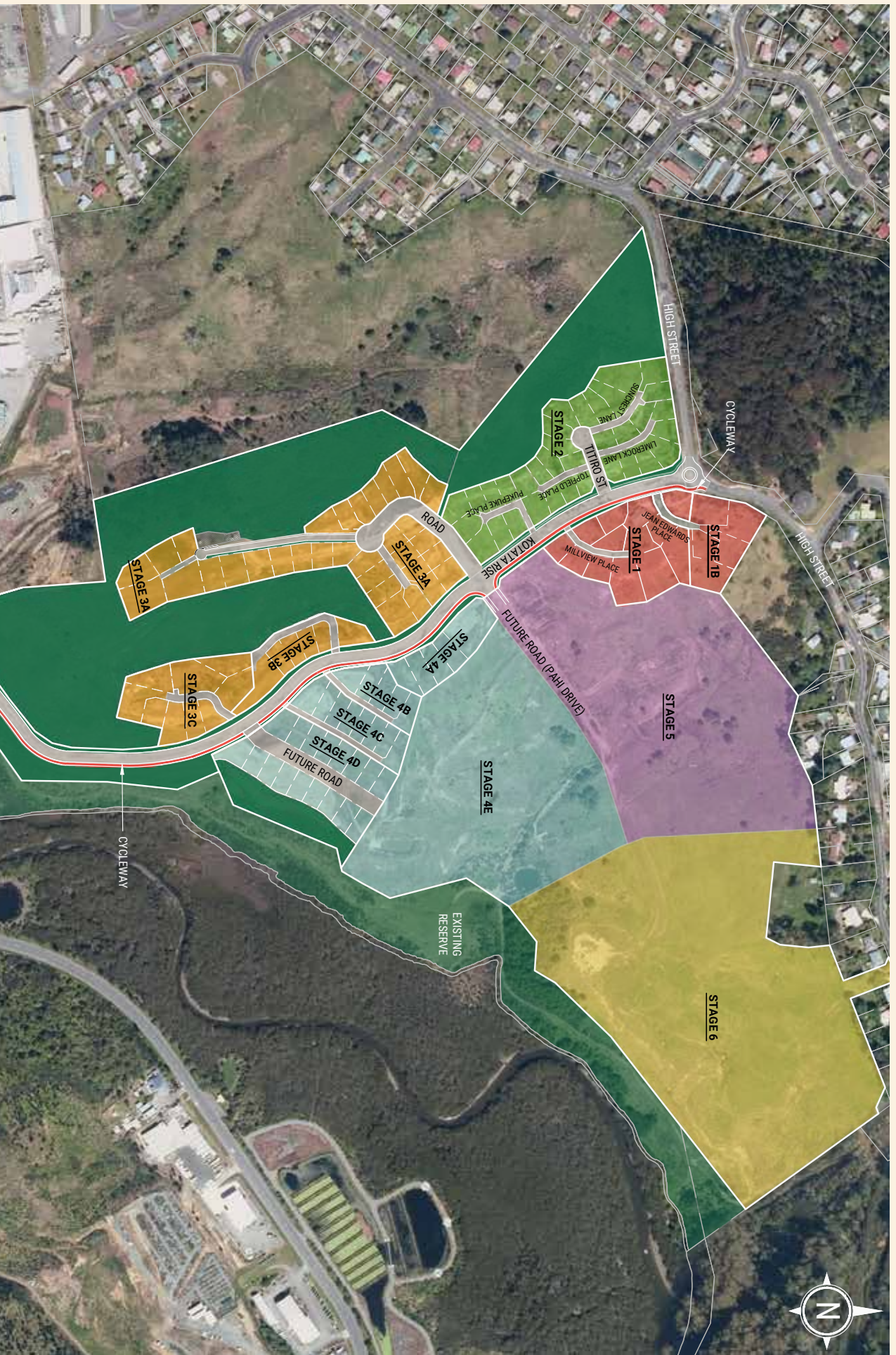


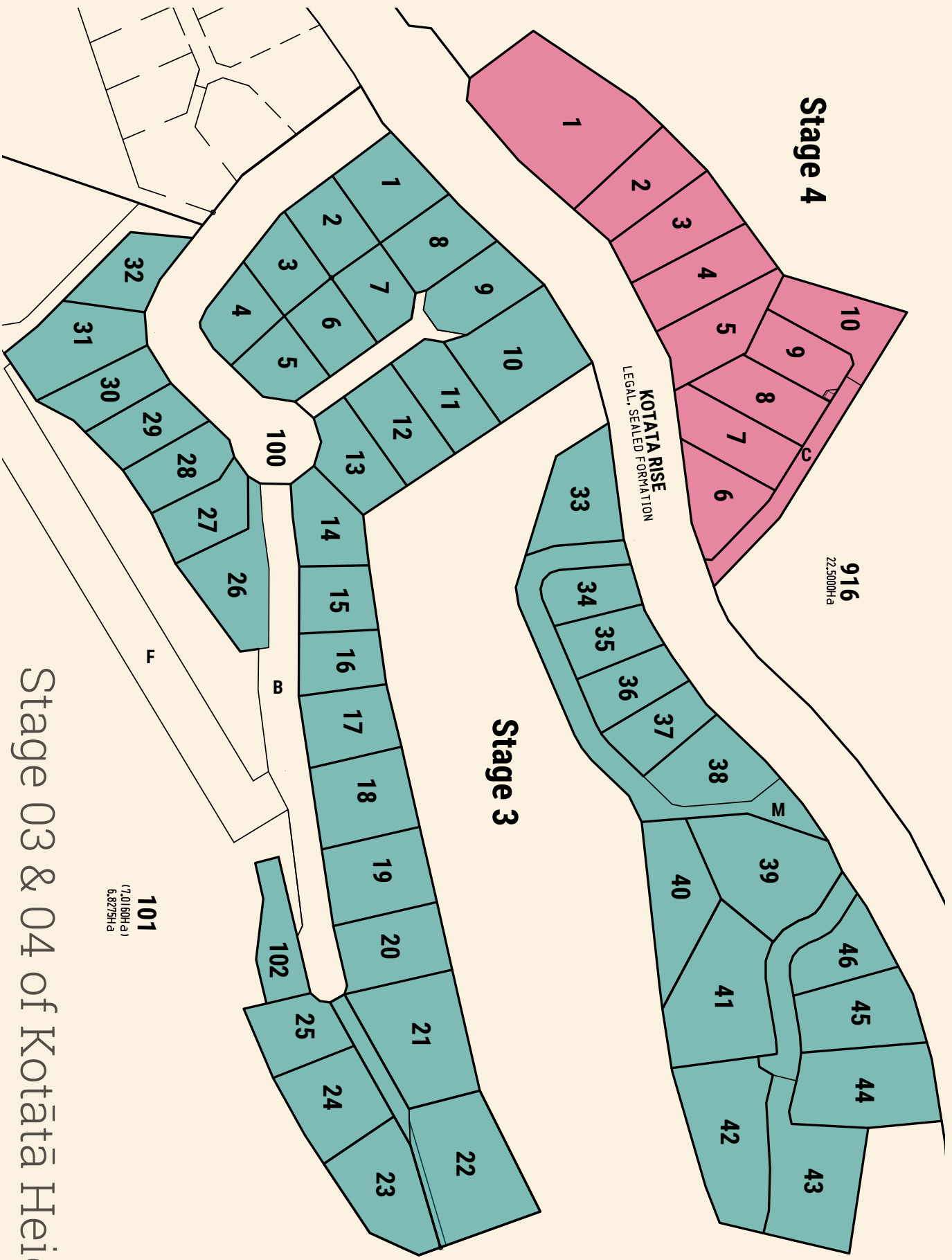
Kotātā Heights is hidden away in the heart of Whangarei city. This elevated and sunny location with expansive rural views is just minutes from the central city, parks, shopping centres, schools, restaurants and more.

This map highlights Whangarei's key amenities and locations with drive times from Kotātā Heights' main entrance.

Enjoy having the city at your doorstep, a short commute to anywhere you need to go, and the freedom of a relaxed urban lifestyle in a safe and modern neighbourhood.

Site plan for Kotātā Heights development





Stage 03 & 04 of Kotatā Heights