



KOTĀTĀ HEIGHTS

Kotātā Heights is Whangarei's newest suburb in the heart of the city. This prime residential area is elevated and sunny, with expansive views, all just minutes the city's amenities.

Kotātā Heights gives you the opportunity to enjoy a brand new home with lovely semi-rural and harbour views, all just minutes from the city. This fantastic suburb gives new meaning to 'close and connected', being centrally located in the heart of Whangarei's main shopping precincts, with close connections to schools, Whangarei Hospital, city bus routes, NorthTec and State Highway One.

Kotātā Heights offers an elevated outlook across rural farmland as well as harbour views from some sections. With an east to west orientation, you will also be treated to morning and afternoon sun.

The second stage of development includes 34 residential sections, priced from just \$190,000, all set along the top ridge of Kotātā Heights. Titles will be available in approximately October 2018, ready for you to begin the design and build of your new home.

All sections include covenants which have been thoughtfully developed to allow home owners the flexibility to reflect their own individuality, while ensuring a quality standard that reflects the pride you will have in your new home and community.

info@kotata.co.nz

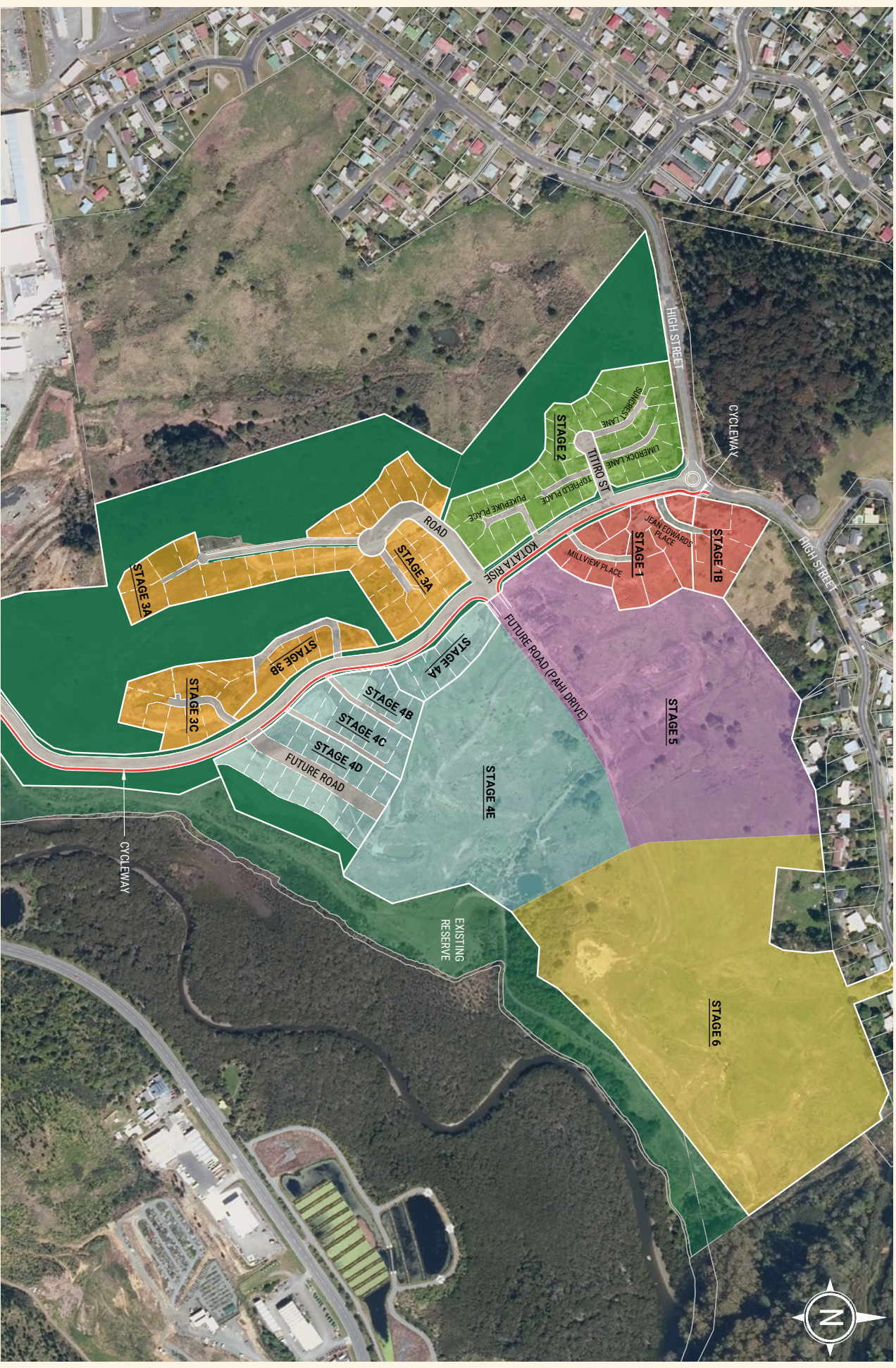
www.kotata.co.nz

Views from the Kotātā Heights Development





Site plan for Kotātā Heights development



Stage 02 of Kotātā Heights

